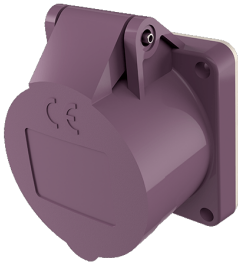


## Anbausteckdose

Bestellnr. 603

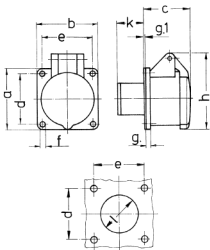


- Schraubkontakt  
gerade Steckrichtung

## Technische Daten

|                   |                |
|-------------------|----------------|
| Ampere            | 16 A           |
| Pole              | 2 p            |
| Volt              | 20-25 V        |
| Hertz             | 50-60 Hz       |
| Anschlussstechnik | Schraubkontakt |
| Kontakt           | standard       |
| Schutzart         | IP 44          |
| Flansch           | 55x55 mm       |
| Bohrloch          | 45x45 mm       |
| Gewicht           | 103 g          |

## Abmessungen



| Zeichnung               | Amp. | 16  |     | 32  |     |
|-------------------------|------|-----|-----|-----|-----|
|                         |      | 2   | 3   | 2   | 3   |
| 1 MB 136                | Pole |     |     |     |     |
| Maße in mm              | a    | 55  | 55  | 55  | 55  |
|                         | b    | 55  | 55  | 55  | 55  |
|                         | c    | 44  | 44  | 44  | 44  |
|                         | d    | 45  | 45  | 45  | 45  |
|                         | e    | 45  | 45  | 45  | 45  |
|                         | f    | 4,2 | 4,2 | 4,2 | 4,2 |
|                         | g    | 8   | 8   | 8   | 8   |
|                         | g-1  | 2   | 2   | 2   | 2   |
|                         | h    | 67  | 67  | 67  | 67  |
|                         | k    | 22  | 22  | 22  | 22  |
|                         | l    | 34  | 34  | 34  | 34  |
| Klemmen für Leiterquer- |      | 4   | 4   | 4   | 4   |
| schnitt von bis mm²     |      | -10 | -10 | -10 | -10 |